

# Mercy

Muse  
Drones

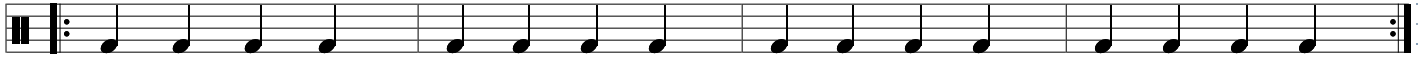
Words & Music by Muse

♩ = 128

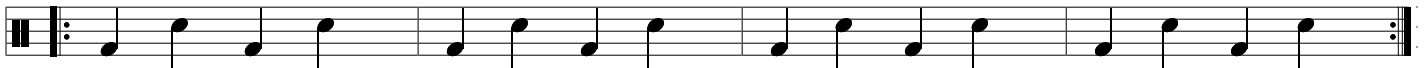
## Intro

Drums 

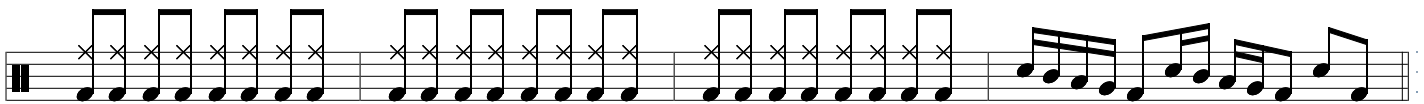
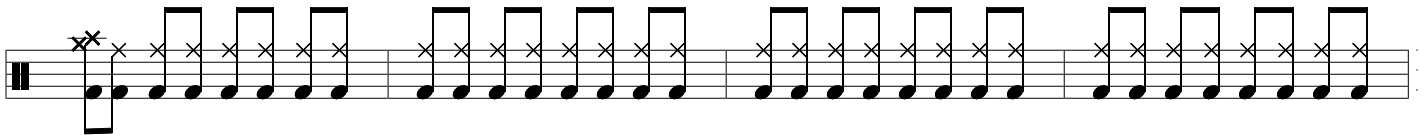
## Couplet



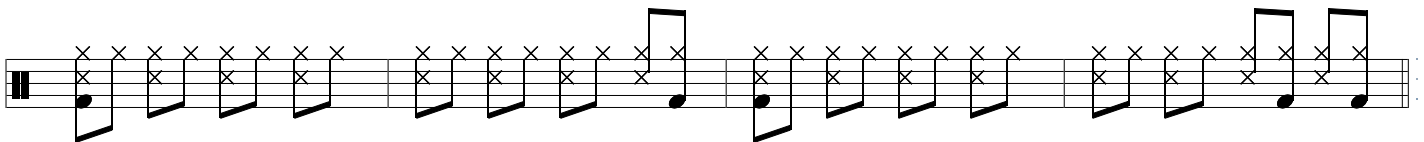
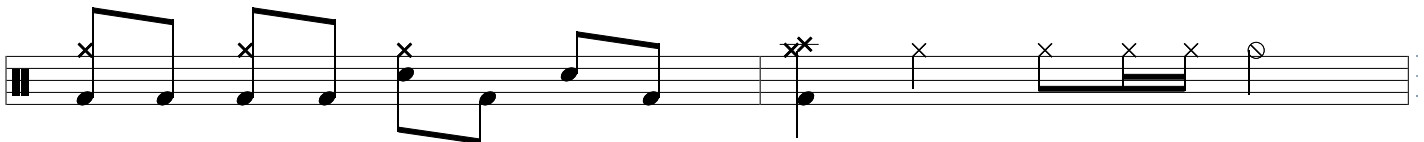
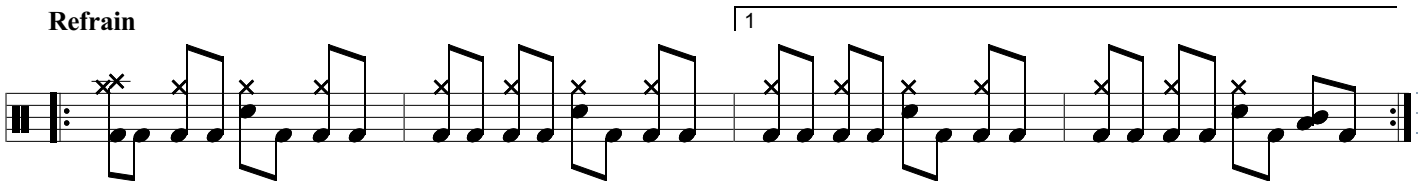
*mf*



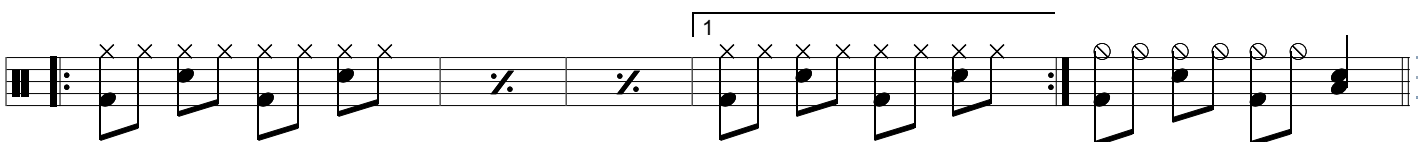
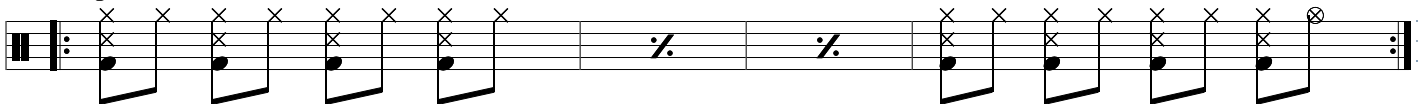
## Pont



## Refrain



## Couplet



Pont

Musical notation for the 'Pont' section, consisting of two staves. The first staff contains a sequence of chords marked with 'x' and a final measure with a repeat sign. The second staff continues the sequence with more chords and a final measure with a repeat sign.

Refrain

Musical notation for the 'Refrain' section, consisting of two staves. The first staff starts with a repeat sign and contains a sequence of chords marked with 'x'. The second staff continues the sequence with more chords and a final measure with a repeat sign. A first ending bracket labeled '1' spans the final two measures of the first staff.

Pont 2

Musical notation for the 'Pont 2' section, consisting of two staves. Both staves contain a sequence of four measures, each with a single chord marked with a diamond symbol.

Pont Basse

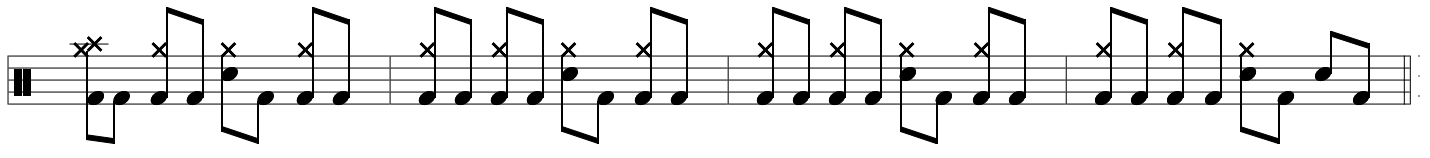
Musical notation for the 'Pont Basse' section, consisting of two staves. Both staves contain a sequence of four measures, each with a single chord marked with a diamond symbol.

Couplet

Musical notation for the 'Couplet' section, consisting of two staves. The first staff contains a sequence of chords marked with 'x' and a final measure with a repeat sign. The second staff continues the sequence with more chords and a final measure with a repeat sign. The dynamic marking *mp* is placed below the first staff, and *mf* is placed below the second staff.

Refrain

Musical notation for the 'Refrain' section, consisting of two staves. The first staff starts with a repeat sign and contains a sequence of chords marked with 'x'. The second staff continues the sequence with more chords and a final measure with a repeat sign. A first ending bracket labeled '1' spans the final two measures of the first staff.



**Outro**

