

Stockholm Syndrome

Muse
Absolution

Words by Muse

Music by Muse

$\text{♩} = 128$

Intro

Drums

f

Entrée Basse

Couplet

Couplet 2

Musical staff with notes and chords marked with 'E' and 'x'.

Pont

Musical staff with notes and chords marked with 'x' and an accent mark.

Refrain

Musical staff with notes and chords marked with 'x' and a repeat sign.

Musical staff with notes and chords marked with 'x'.

1

Musical staff with notes and chords marked with 'x' and a repeat sign.

Pont

Musical staff with notes and chords marked with 'x' and a circled 'x'.

Couplet

Musical staff with notes and chords marked with 'x' and an accent mark.

Musical staff with notes and chords marked with 'x' and an accent mark.

f

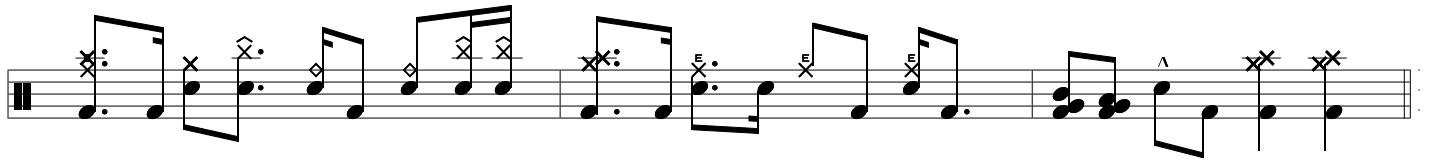
Musical staff with notes and chords marked with 'E' and 'x'.

Musical staff with notes and chords marked with 'E' and 'x'.

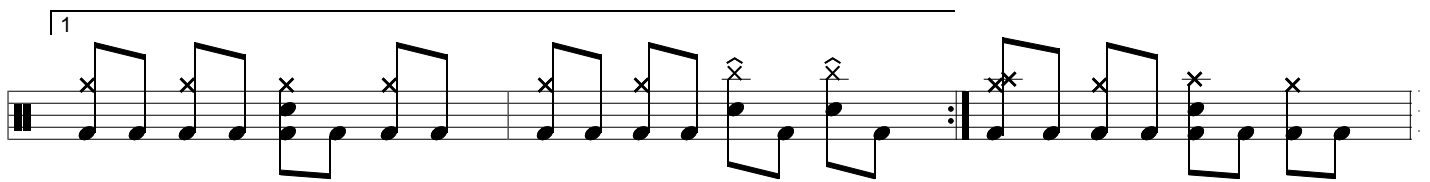
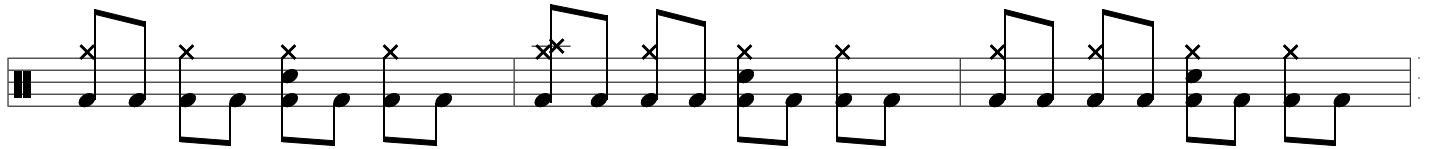
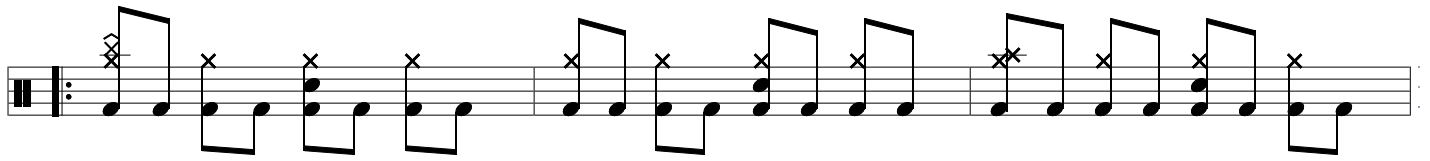
Pont

Refrain

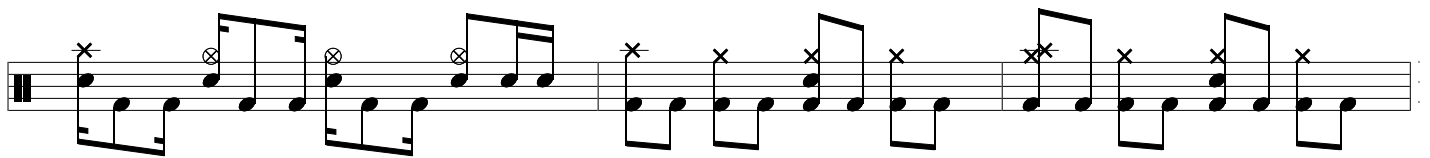
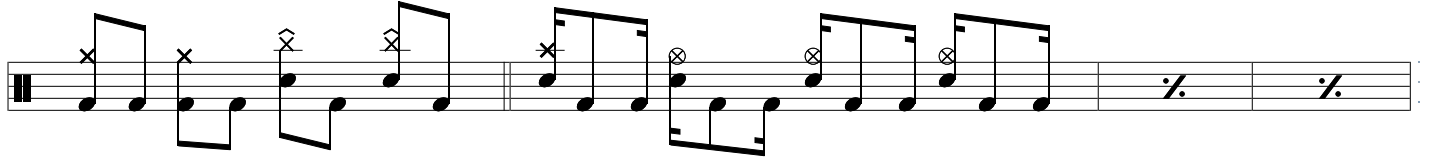
Solo



Refrain



Outro



ff

